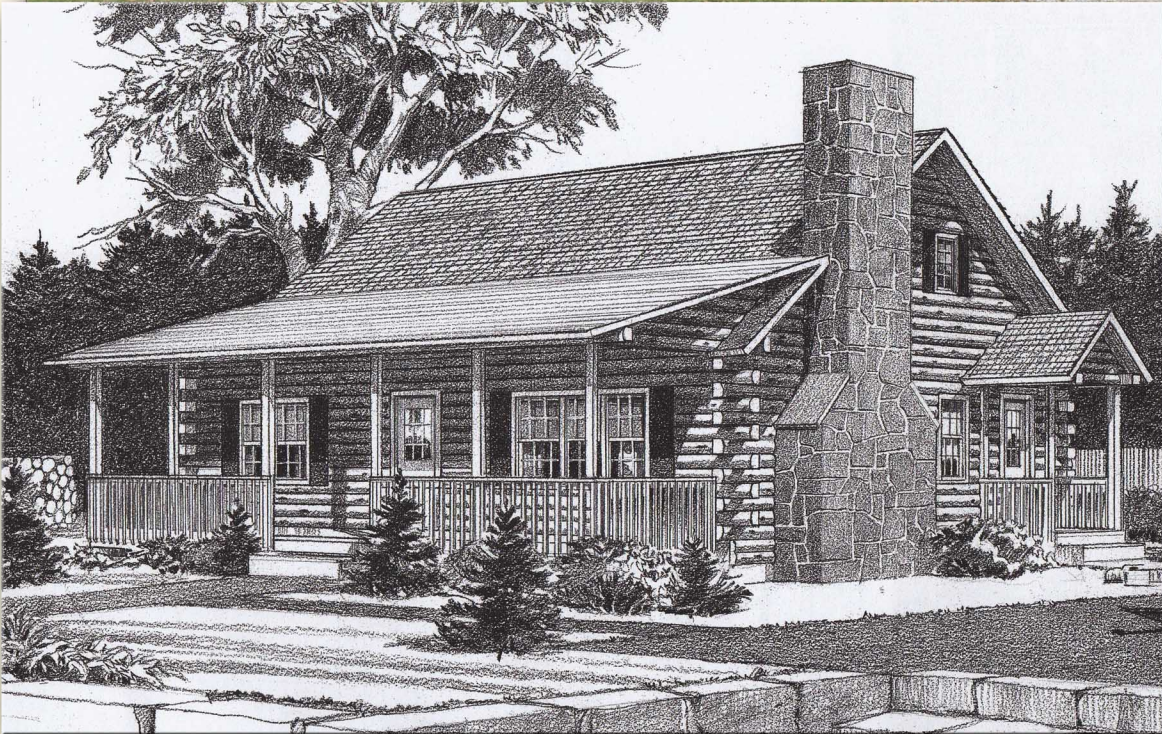




# The Kingston



*Kingston photograph above shown with optional enclosed porch area*

*Artist's rendering at right shows the standard porch entrance*

Northeastern Log Homes

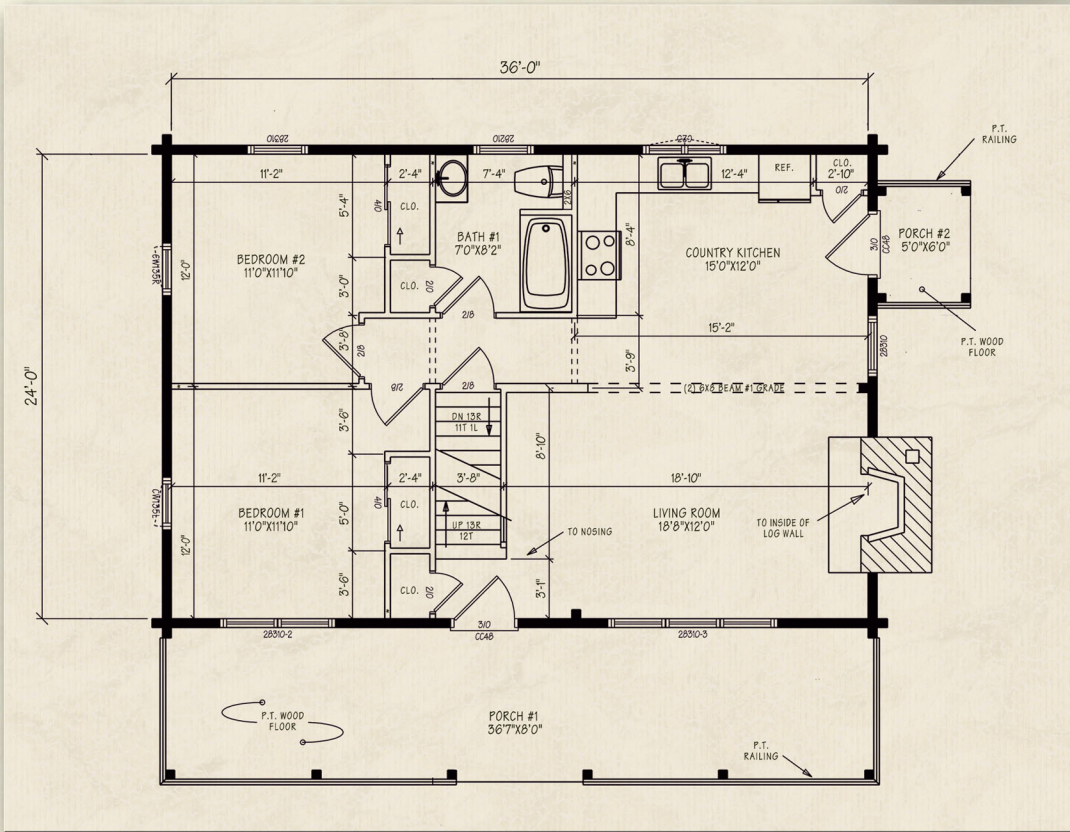
[info@northeasternlog.com](mailto:info@northeasternlog.com) 800-624-2797 [www.northeasternlog.com](http://www.northeasternlog.com)

\*Artist's rendering, photography and optional design ideas may vary from the standard model. Please always consult the standard floorplan and refer to the Premier Series material list as to what is included.





# The Kingston

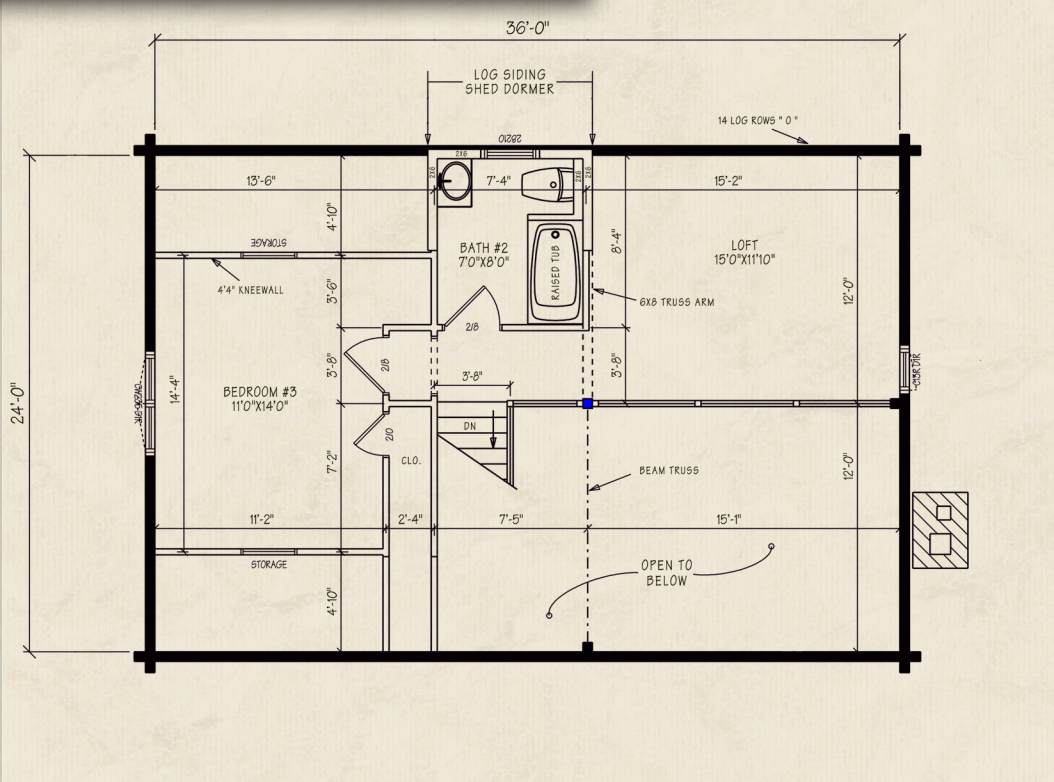


Premier Home Series

- 
- 24' x 36' Size
- 
- 1,558 Square Feet
- 
- Three Bedrooms
- 
- Two Full Baths
- 

Price information available for download on our website

- Optional Design Ideas:
- - Make a first floor Master Suite by removing the partition between Bedroom #1 and Bedroom #2
  - 
  - Install built-in pull-out drawers in the bedroom #3 storage area
  - 
  - Extend the rear dormer over the bedroom to utilize the entire second floor area
  - 
  - Move the fireplace next to the stairs and put (2) windows on that right side
  - 
  - Also--see the Bigelow in the Traditional Home Series



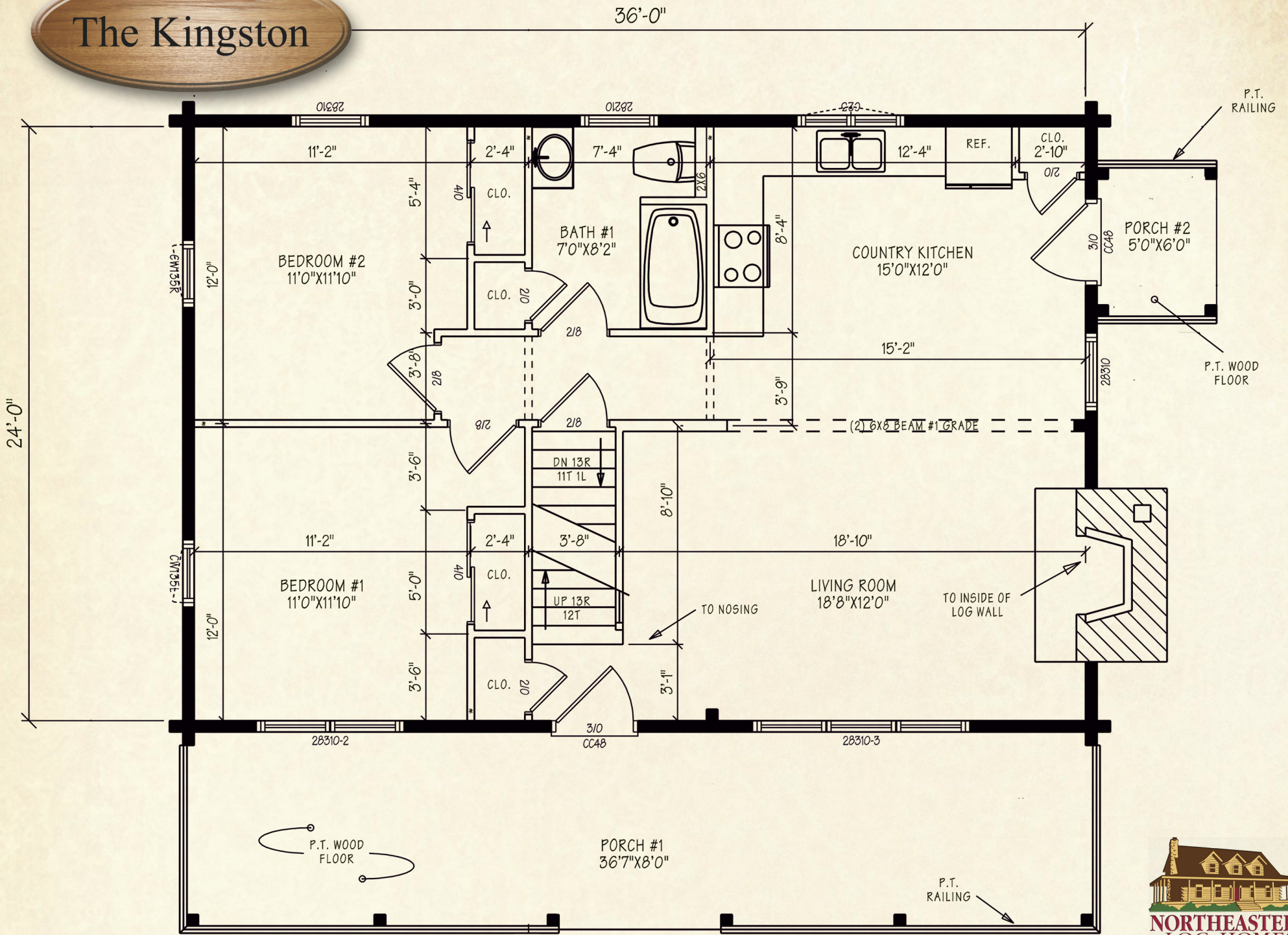
Northeastern Log Homes

info@northeasternlog.com 800-624-2797 www.northeasternlog.com

\*Artist's rendering, photography & optional design ideas may vary from the standard model. Please always refer to the standard floorplan and consult the Premier Home Series Material List as to what is included. All plans, photography and images copyright NLH 2016



# The Kingston





# The Kingston

